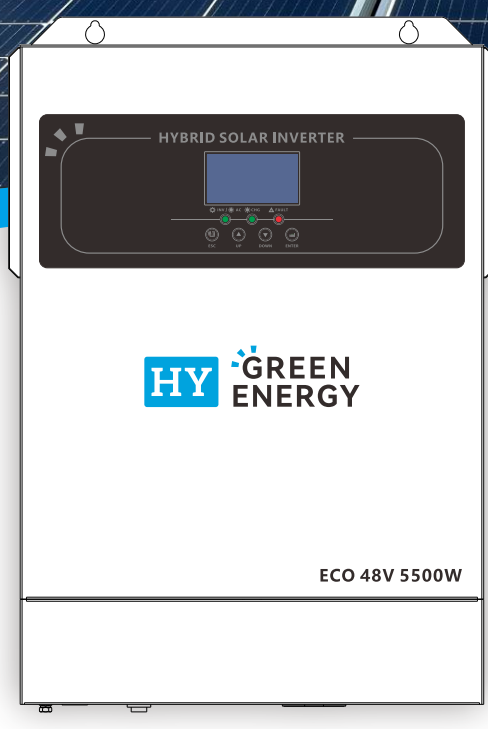


ECO Hybrid Solar Inverter

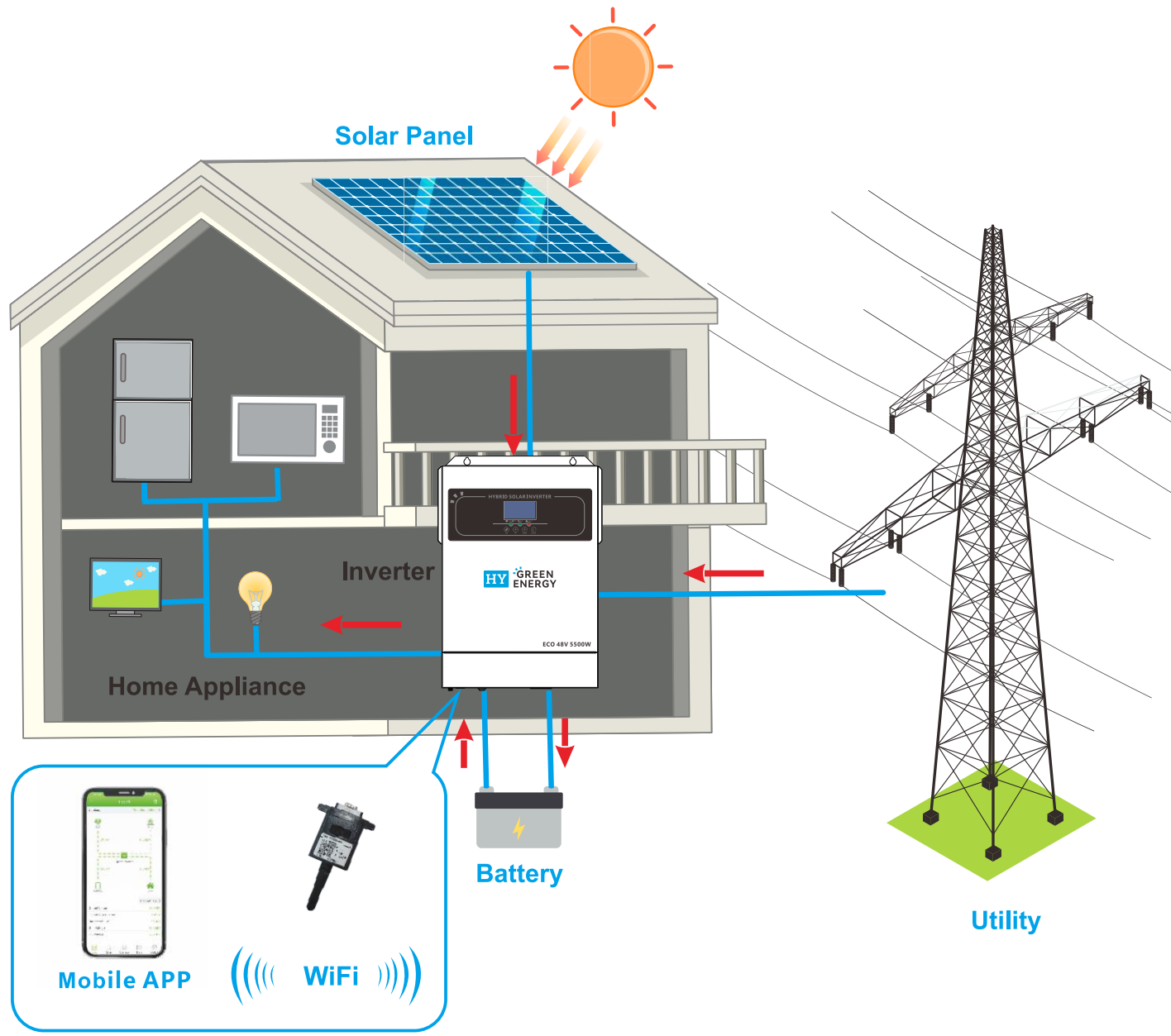
3.5KW 24V / 5.5KW 48V 100A MPPT



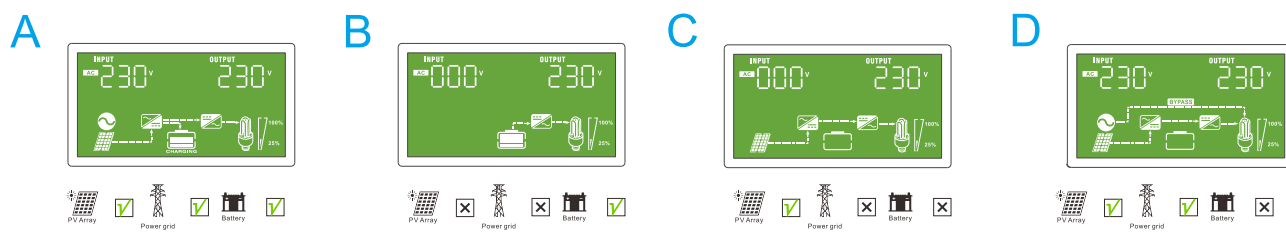
Features

- Pure sine wave
- Output power factor 1.0
- High PV input voltage range 500Vdc Max
- Built-in MPPT solar charge controller
- Detachable dust cover for harsh environment
- Support multiple output priority: UTL, SOL, SBU, SUB
- WiFi remote monitoring optional
- Capable to work without battery
- Battery equalization function to optimize battery performance and extend lifecycle

Application Diagram



System Diagram



Technical Data

MODEL	EY3500-24	EY5500-48
CAPACITY	3.5KVA/3.5KW	5.5KVA/5.5KW
INPUT		
Nominal Voltage	230VAC	
Acceptable Voltage Range	170-280VAC(For personal Computer);90-280vac(For Home Appliances)	
Frequency	50/60 Hz(Auto sensing)	
OUTPUT		
Nominal Voltage	220/230VAC±5%	
Surge Power	7000VA	11000VA
Frequency	50/60Hz	
Waveform	Pure Sine wave	
Transfer Time	10ms(For personal Computer);20ms(For Home Appliances)	
Peak Efficiency(PV to INV)	96%	
Peak Efficiency(Battery to INV)	93%	
Overload Protection	5s@>= 150% load; 10s@110%~150% load	
Crest Factor	2:1	
Admissible Power FACTOR	0.6~1 (inductive or capacitive)	
BATTERY		
Battery Voltage	24VDC	48VDC
Floating Charge Voltage	27VDC	54VDC
OverCharge Protection	33VDC	63VDC
Charging Method	CC/CV	
Solar Charger & AC Charger		
Solar Charger TYPE	MPPT	
Max.PV Array Power	4000W	5500W
Max.PV Array Open Circuit Voltage	500VDC	
PV Array MPPT Voltage Range	120VDC~450VDC	
Max.Solar Input Current	15A	18A
Max.Solar Charge Current	100A	100A
Max.AC Charge Current	60A	60A
Max.Charge Current	100A	100A
PHYSICAL		
Dimensions,D x W x H(mm)	438x295x105	
Package Dimensions,D x W x H(mm)	560x375x185	
Net Weight(Kg)	7	9
Communication Interface	RS232	
ENVIRONMENT		
Operating Temperature Range	(-10°C to 50°C)	
Storage temperature	(-15°C ~ 50°C)	
Humidity	5% to 95%Relative Humidity(Non-condensing)	

Product specifications are subject to change without further notice.